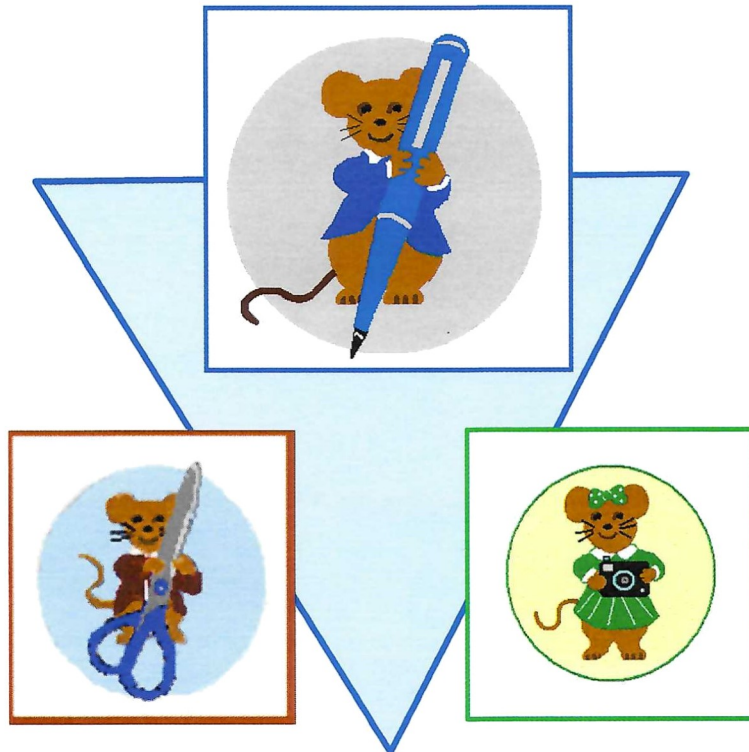


“How Now Brown Mouse?”

The Evolution of Anon E. Mouse Cachets



Cynthia Scott
4505 Chapel Dr
Columbus, IN
47203

Frame

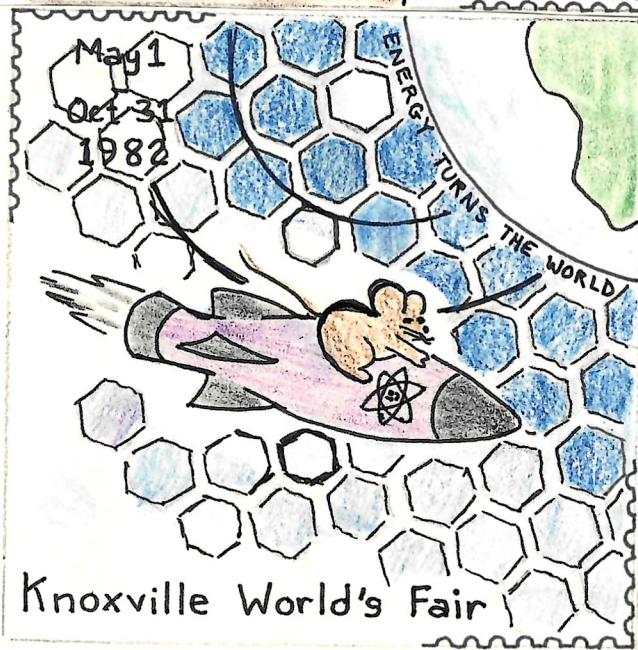
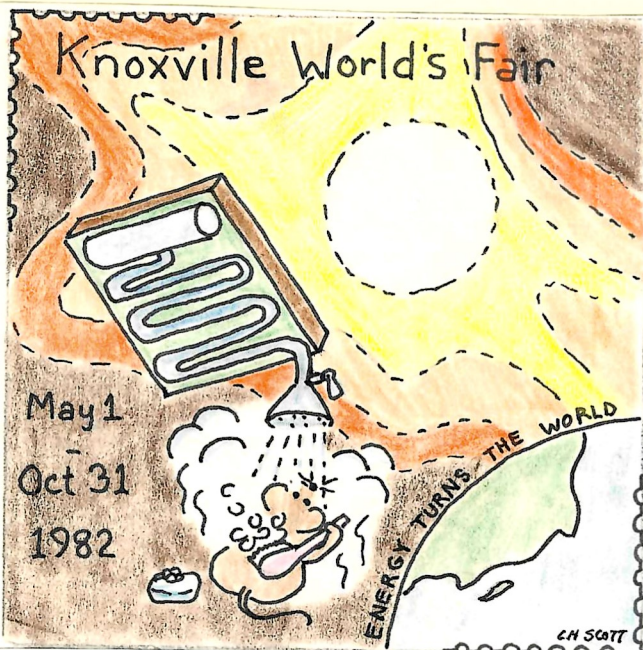
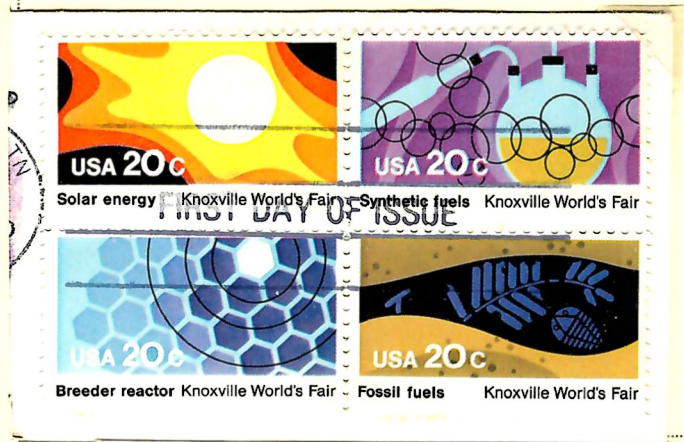
2

A.2.b. Wood & Acrylic Light Box

A.2.b.4. Mosaic Puzzle

The Knoxville World's Fair setenent inspired a way to combine four different individual cachets to make one big mosaic picture by touching corners of four cachets together on a central point.

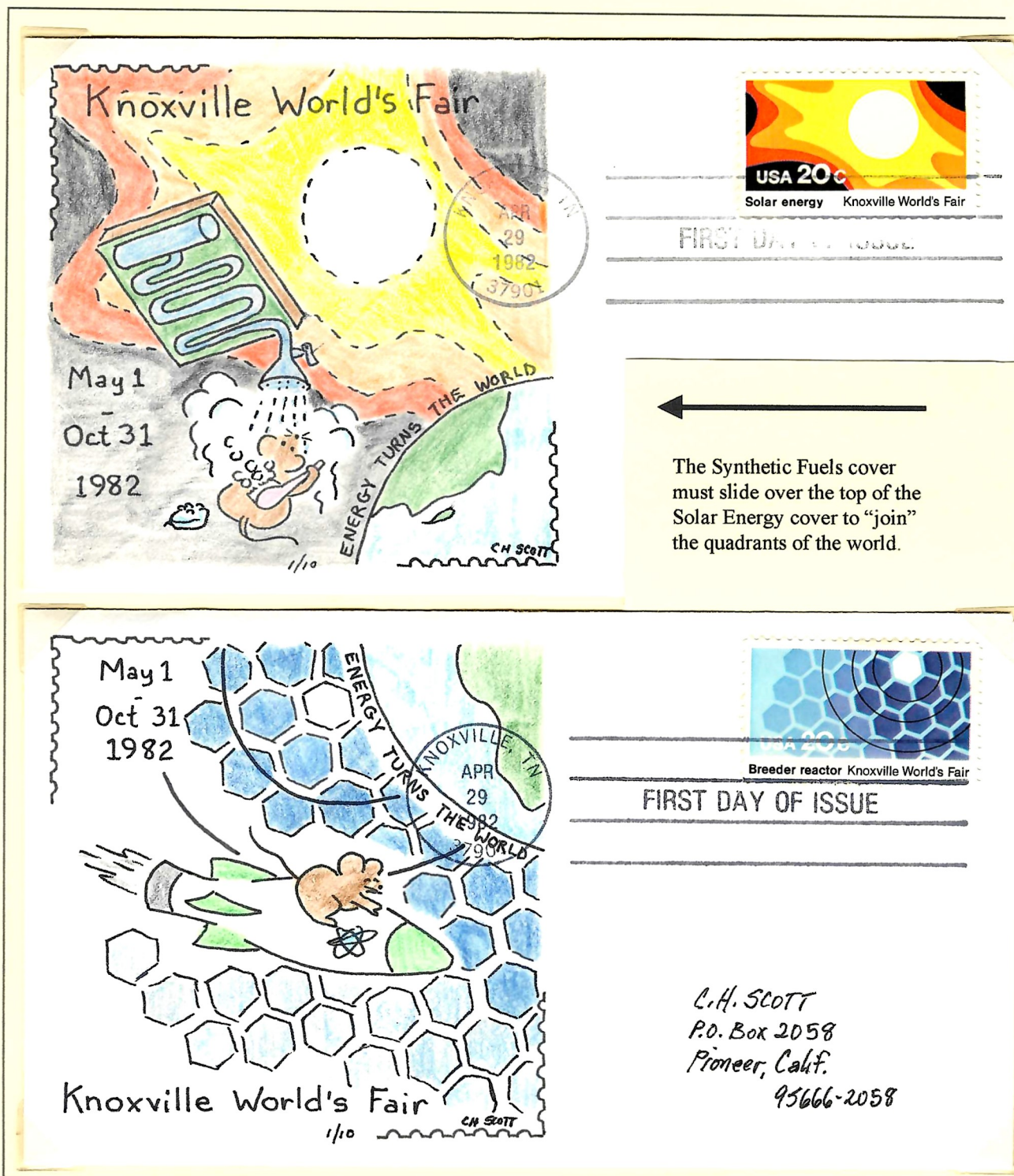
This is the FIRST and only mosaic set by Anon E. Mouse Cachets to date.



A.2.b. Wood & Acrylic Light Box

A.2.b.4. Mosaic Puzzle

As seen on the previous page, the mosaic puzzle cachet templates made a whole "world" when pieced together just so. The plan fell apart, however, when the artist failed to buck the cachet-on-the-left-side tradition she learned and took for granted as a beginner.



A.2.b. Wood & Acrylic Light Box

A.2.b.4. Mosaic Puzzle

These covers returned to the maker wrapped in cellophane. Someone in the mail system wrote on the wrapped Fossil Fuel cover (bottom) with a ball-point pen, leaving an impression behind. The acrylic overlay traces their message: "Do Not Open."



Synthetic fuels Knoxville World's Fair

FIRST DAY OF ISSUE

C.H. SCOTT
P.O. Box 2058
Pioneer, Calif.
95666-2058



Fossil fuels Knoxville World's Fair

FIRST DAY OF ISSUE

Do NOT
OPEN

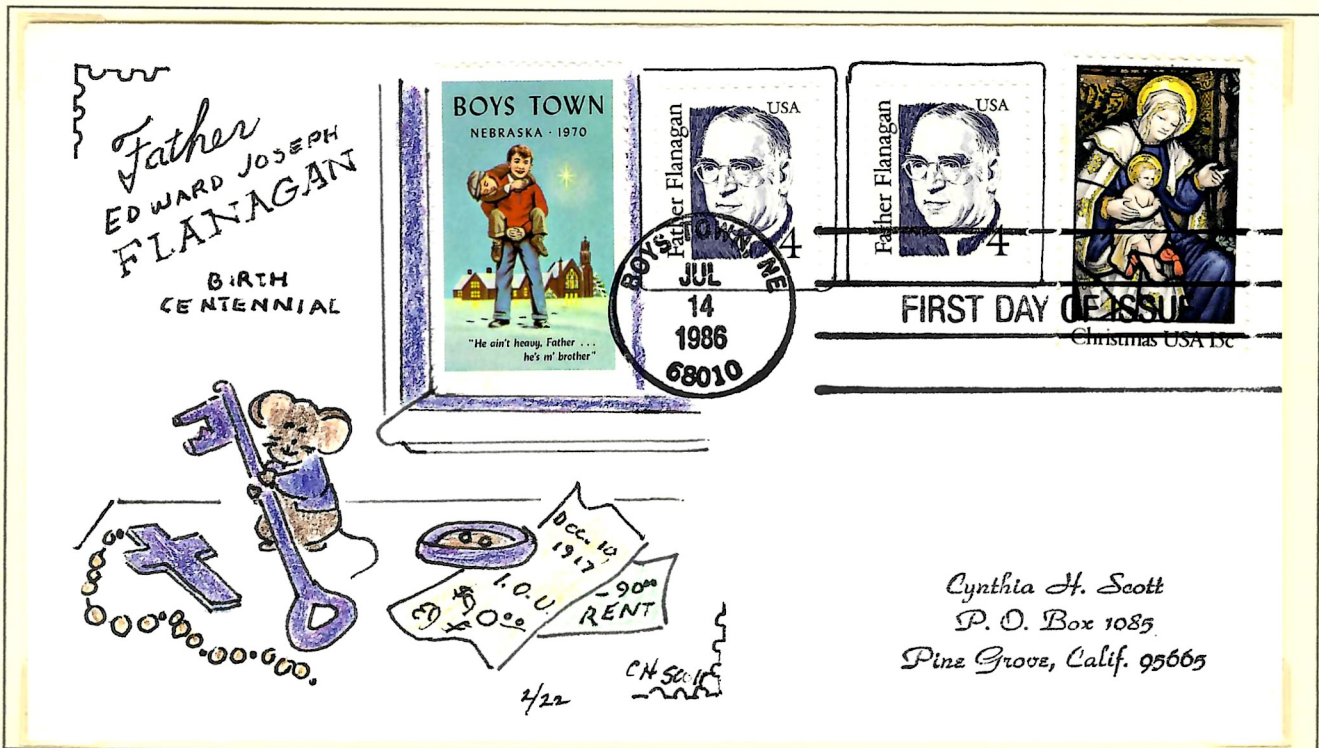
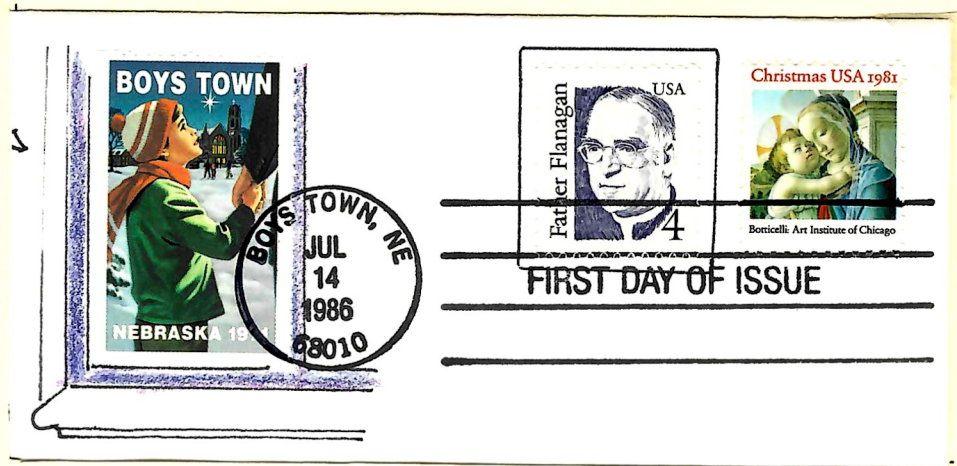
C.H. SCOTT
P.O. Box 2058
Pioneer, Calif.
95666-2058

A.2.b. Wood & Acrylic Light Box

A.2.b.5. "Cinderella" Stick On

The drawing in this cachet plays second place to the Boys Town sticker placed as the view "out the window." This the FIRST (and only to date) use of a non-postal item on an Anon E. Mouse Cachet.

To make up the correct First Class rate, the featured Father Flanagan stamp combines with Traditional Christmas issues from earlier years. These covers are samples of two of the most common configurations produced.

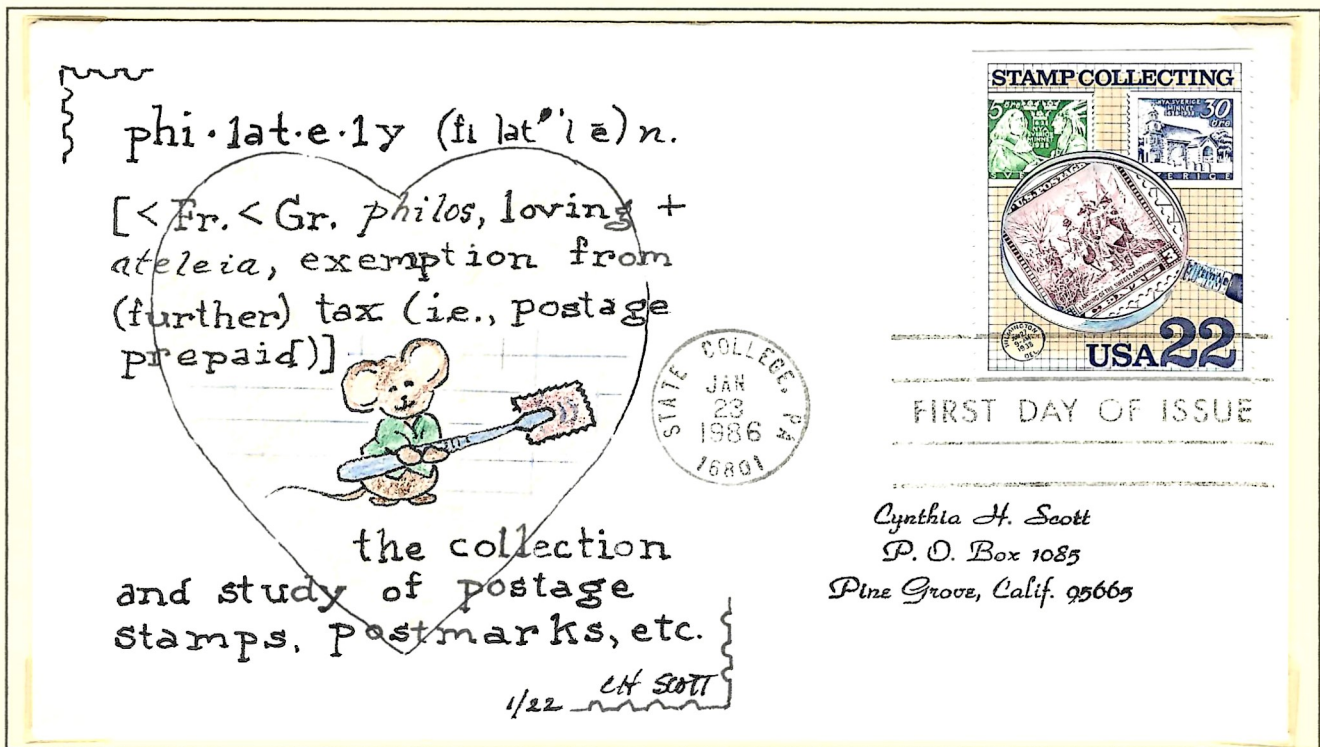


A.2.b. Wood & Acrylic Light Box

A.2.b.6. Common Designs

This cover has one of four common designs planned for the joint U.S. - Sweden Stamp Collecting Booklet issue. The following exhibit page shows the whole original working plan, which includes the identifying numbers for each coloring pencil.

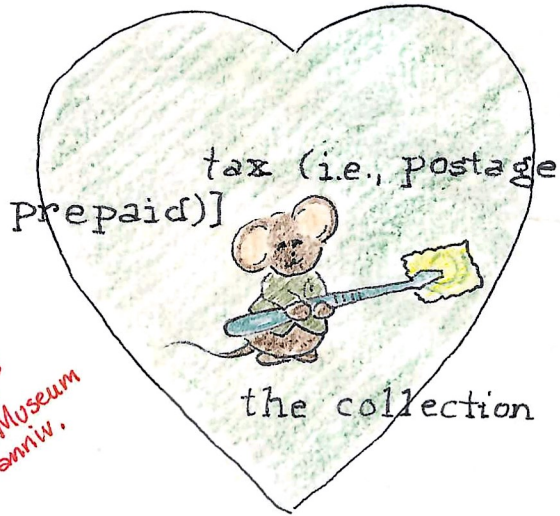
Careful notes of this nature were necessary because (by this time in the evolution of Anon E. Mouse) the cachets were usually added to the covers after they returned from servicing. With many interruptions for tending to home life and employment, two or three months passed by before all the cachets were applied.



This was the first commemorative stamp booklet issued by the U.S.P.S. and thus for all U.S. cachet makers who participated, it was the FIRST chance to produce cachets for such an issue.



JAN. 23, 1986

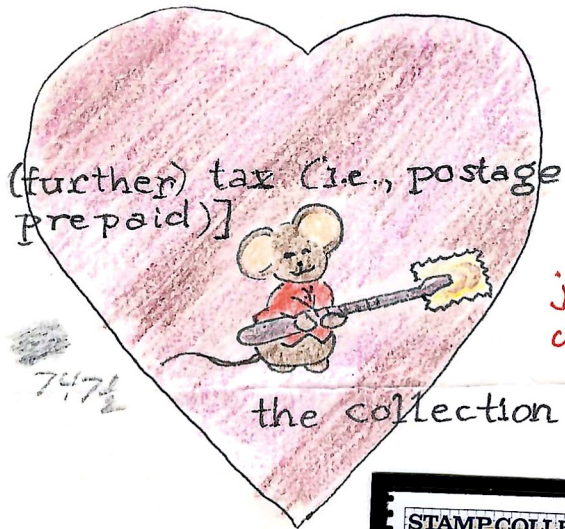


APS
Nat. Museum
anniv.

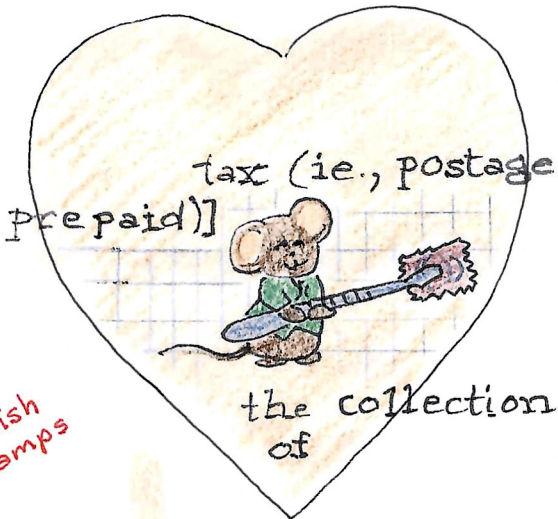
- 737 1/2
- 739 1/2
- 735
- 006



- 752
- 12,
- 745
- 735
- 005
- ~~746 1/2~~
- 747 1/2



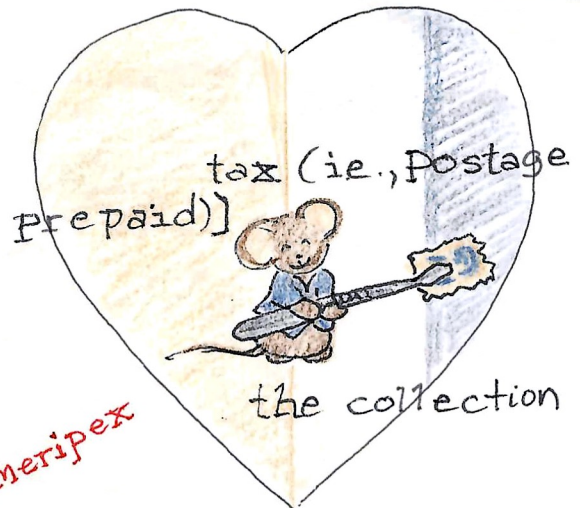
jr
collector



- 006
- 741 ← #13, 1, 21
- 746 1/2
- 757



Swedish
Stamps



- 741
- 747 1/2
- 757

Ameripex

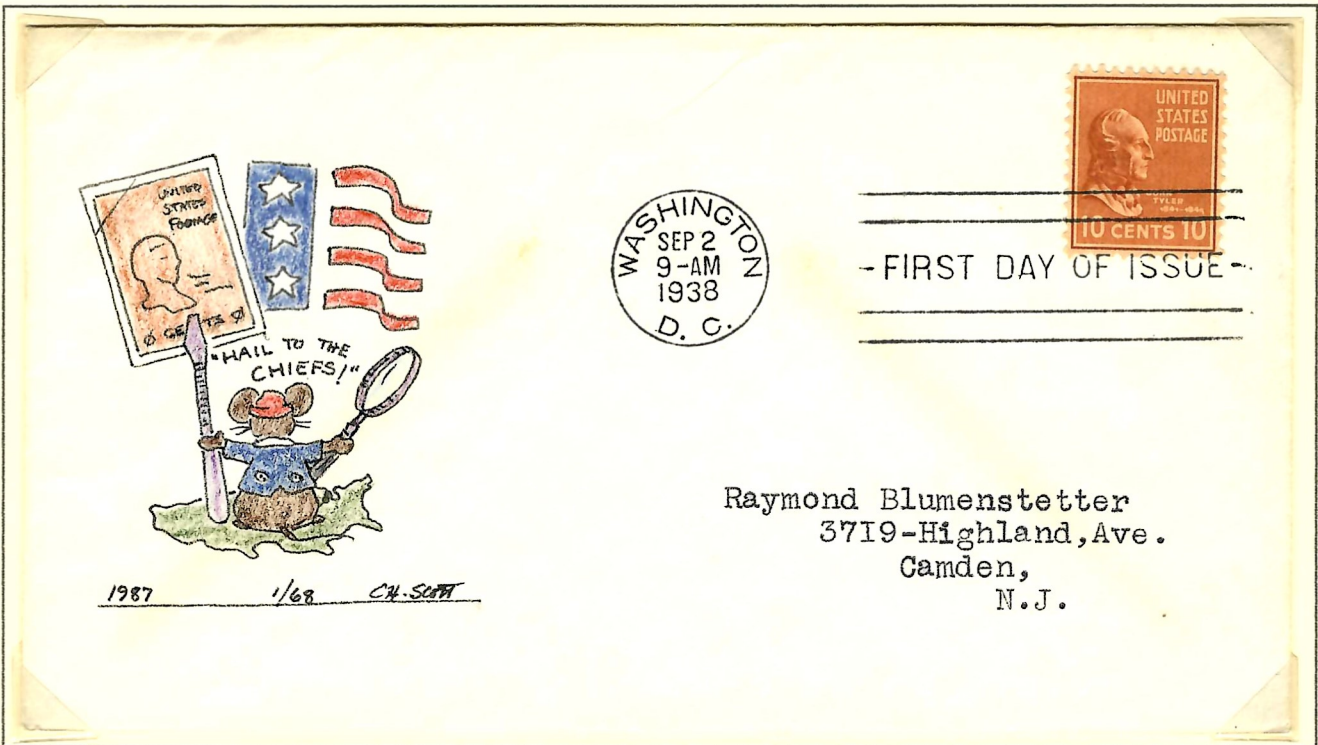


W

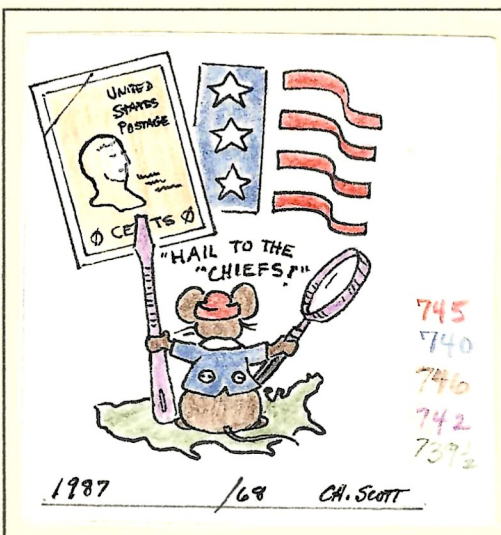
2,

A.2.b. Wood & Acrylic Light Box

A.2.b.6. Common Designs



This was the FIRST add-on Anon E. Mouse cachet produced in large quantity. The artist kept 22 of 68 embellished covers for subscribers, and the rest were returned to collector Roger Listwan. Because Roger had collected so many FDCs of the 1938 Presidential series, he felt it would do no harm to add a cachet to those that were common duplicates.

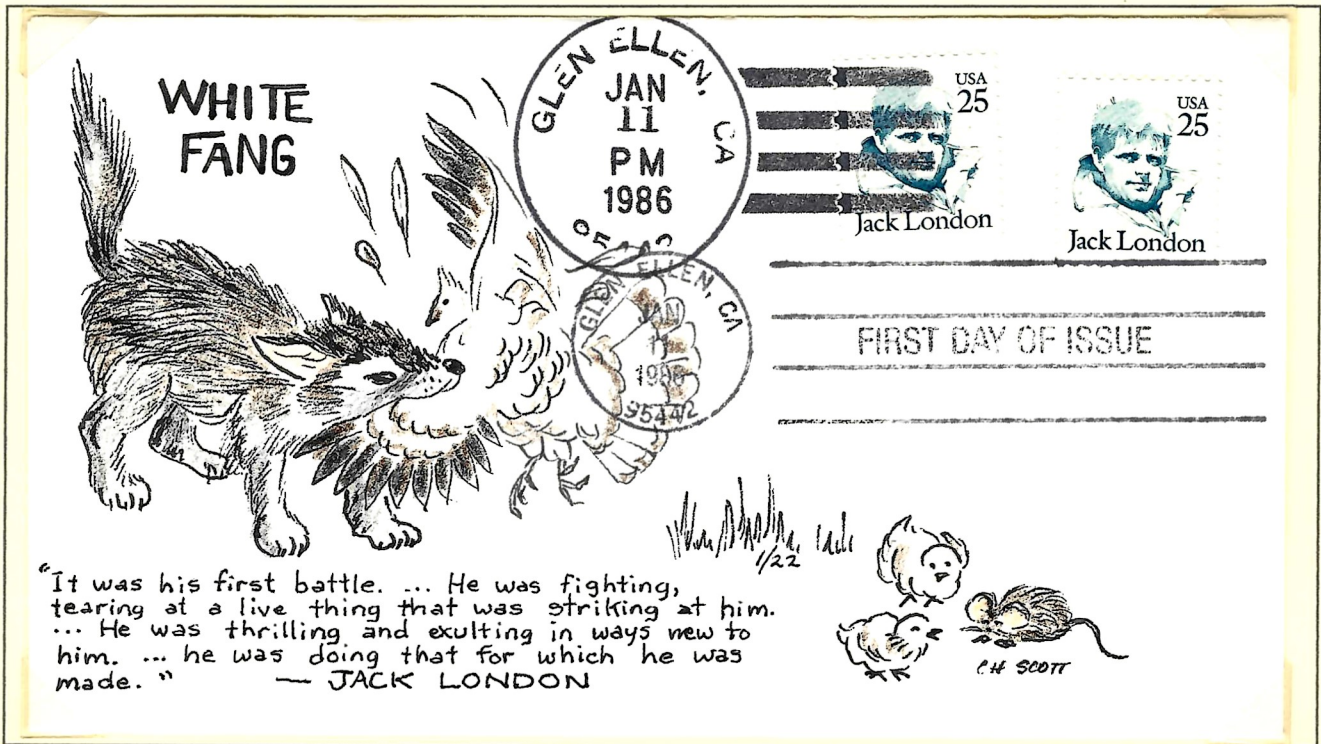


The cachet is small enough to be placed in slightly different positions on envelopes that have large hand-written addresses or return addresses.

Anon E. Mouse is facing away from the viewer because the artist couldn't get his face "right" that week. All the cachets are the same (common design) except for the color of the stamp held in the stamp tongs. They were tinted to match the different denominations of the Presidential series found on these covers.

A.2.b. Wood & Acrylic Light Box

A.2.b.7. Second Cancel Combos



This was the FIRST second-cancel combo contrived by Anon E. Mouse to show that the cover really was canceled on the First Day of Issue.



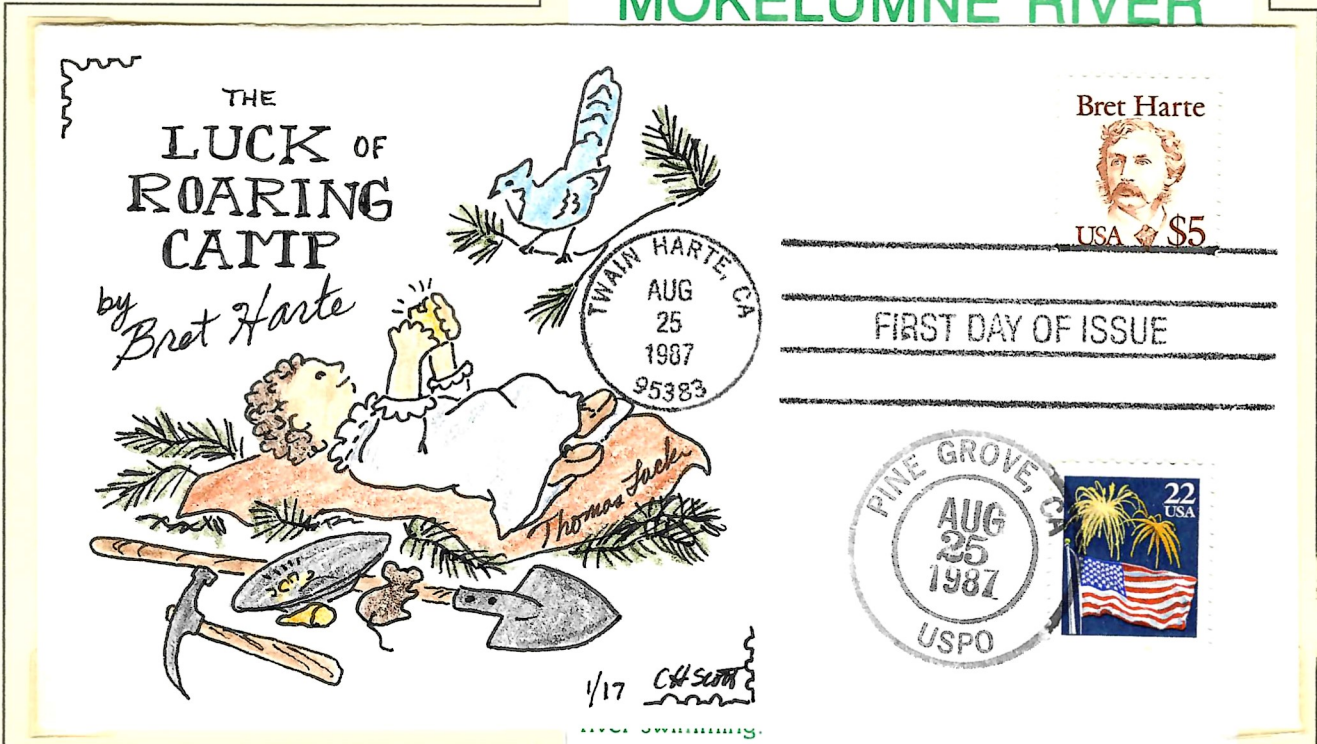
This is also the FIRST cachet that shows Anon E. Mouse with fur; or rather -- pen strokes that indicate fur.

A.2.b. Wood & Acrylic Light Box

A.2.b.7. Second Cancel Combos

Twain Harte, CA is a three-hour drive from Pine Grove, where Anon E. Mouse was living in 1987. After servicing covers in Twain Harte, there was still time to drive back down the mountain to Pine Grove for this unofficial city cancel.

**GUIDED TOURS TO
Roaring Camp
AN OLD 49ER
GOLD CAMP ON THE
MOKELUMNE RIVER**



This Roaring Camp does not claim to be the same one in Harte's story, but it is the right kind of location: a mining site on the Mokelumne River.

**—RESERVATIONS REQUIRED—
SPECIAL TOURS AND
COOKOUTS ARRANGED**

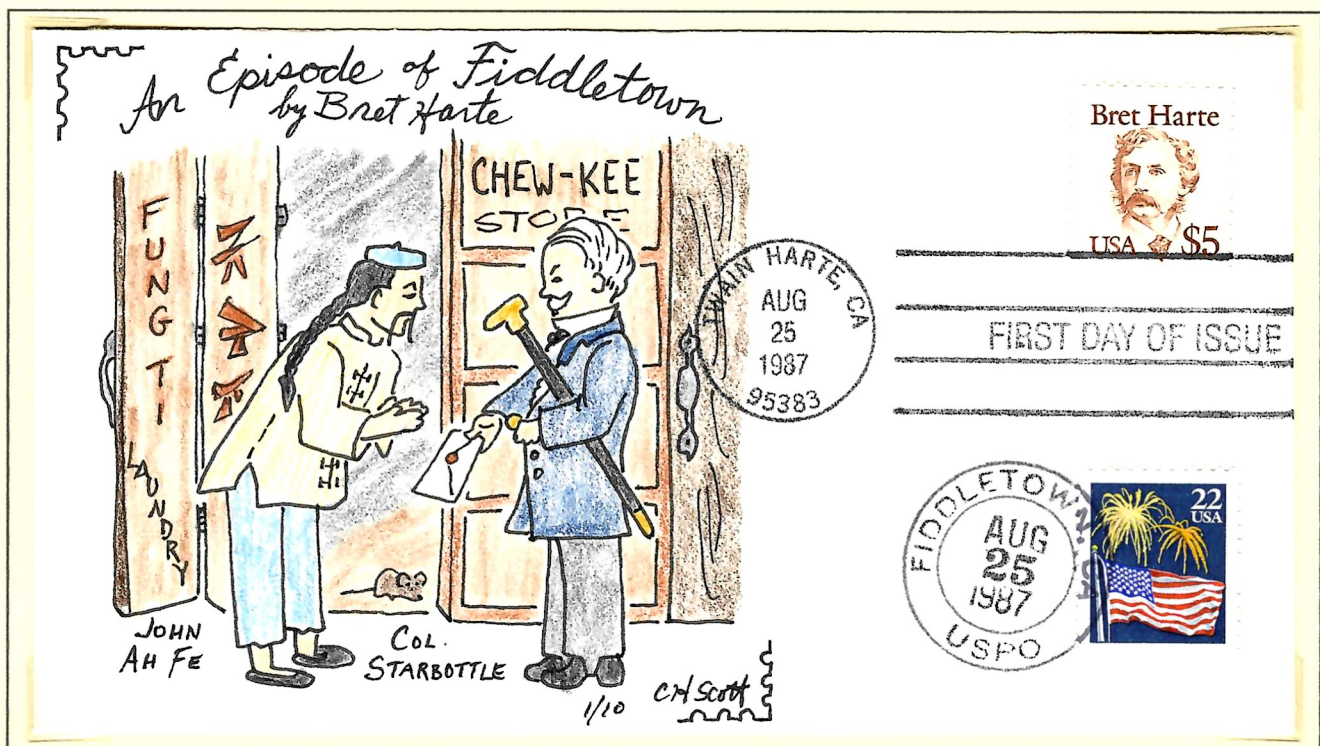
**For Information Write or Call
Roaring Camp Mining Co.
P.O. BOX, 278, PINE GROVE, CALIF. 95665
PHONE: (209) 296-4100**

A.2.b. Wood & Acrylic Light Box

A.2.b.7. Second Cancel Combos

After canceling the Roaring Camp FDCs in Pine Grove, Anon E. Mouse drove an additional 14 miles of back-country roads to Fiddle Town. The lone postal clerk/Postmaster was happy to add her unofficial city cancel to the Bret Harte FDCs. Only one or two other FDC fanatics had requested the same service that day.

The second stamp is not another Bret Harte for a very simple reason: expense. Interest in this Bret Harte issue led to the FIRST grossly over-franked Anon E. Mouse cachets. This exception to normal practice happened because the artist collects American authors on stamps.



The cachet artist visited Fiddle Town earlier, to get a look at the Fung Ti Laundry and Chew-Kee Store before drawing the cachet. Even though it's never been proven that Harte actually went there to research the locale, the old laundry and store did exist during the years of his story "An Episode of Fiddle Town." The building is still occasionally opened for viewing.

This was the LAST hand drawn cachet reproduced by over tracing with the wood and acrylic light box. The method worked well, but took too long. The light box is still used during the development phase of some cachets.

B. Commercial Offset Printing

B.1. Black on White

B.1.a. Details Added by Hand

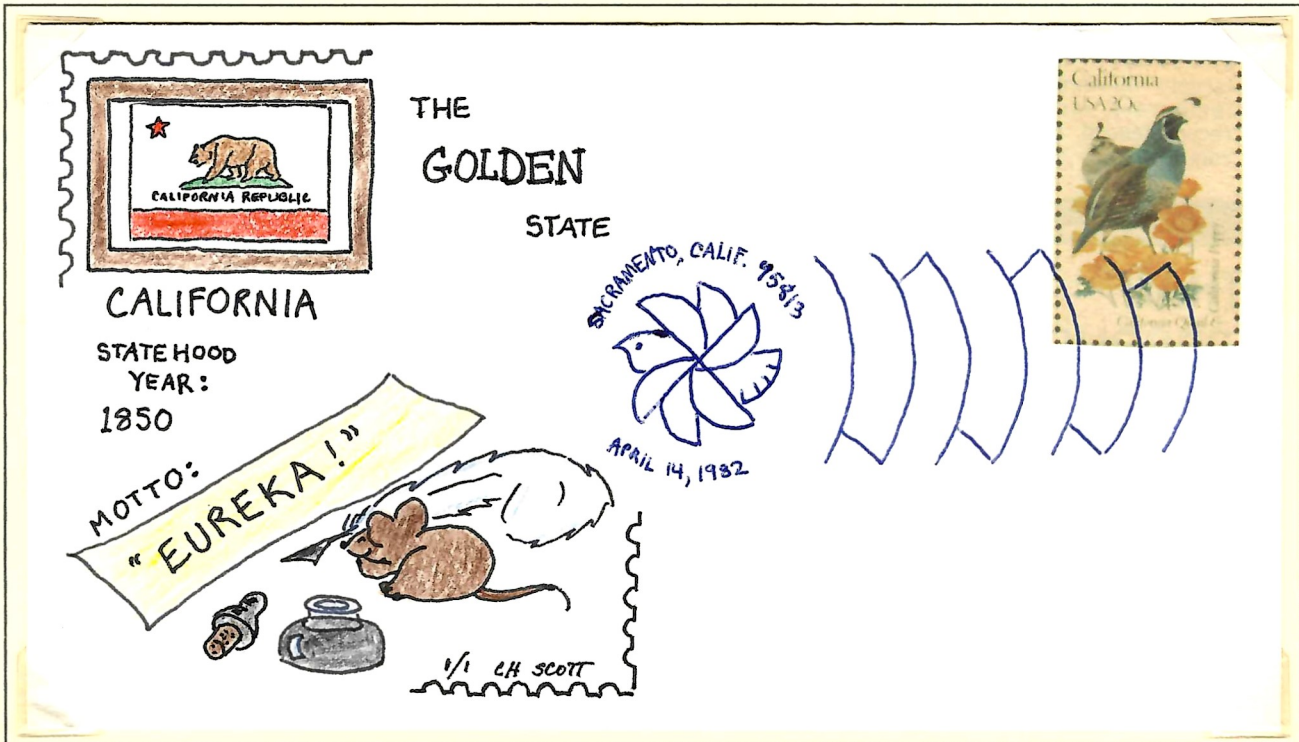
The State Birds and Flowers issue presented a real challenge to anyone trying to create cachets for nearly every commemorative stamp of 1982. By taking a common design to the printer for reproduction, the artist hoped to reduce the amount of repetitious hand work that fifty different stamps would bring.

News of the 50 State Birds and Flowers appeared in *The Stamp Collector* well ahead of the issue date. Pictures of the new stamps were included in the article. This allowed plenty of time for planning and experimenting with cachet designs. The cover shown below served as a design test.



The Bicentennial State Flags issue of 1976 provided the model for the California flag.

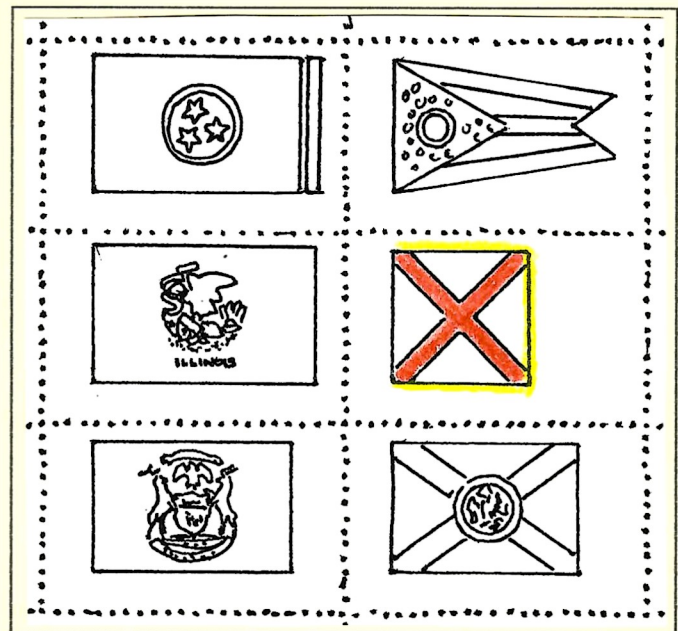
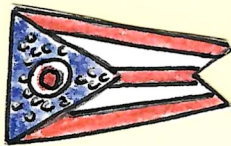
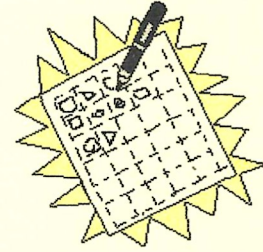
Picture clipped from newspaper:



B.1. Black on White

B.1.a. Details Added by Hand

The light box was called into service again to enable tracing of the state flags. Tracings of the Bicentennial State Flags were photocopied, hand colored, and then cut from their sheets to be pasted into the cachet.

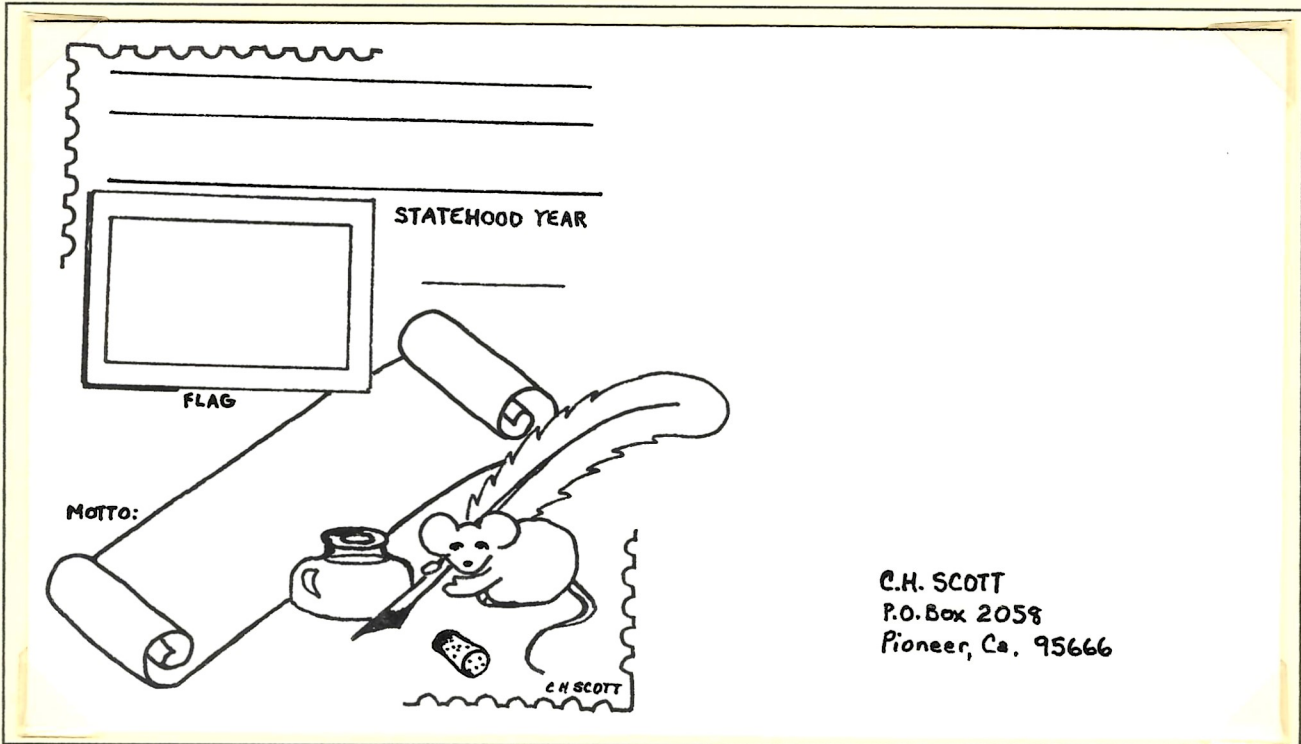


After the flags were finished, the state names, nick names, statehood dates, and mottos were hand written on each cover. Working on and off, it took seven months to complete ten sets of fifty covers.

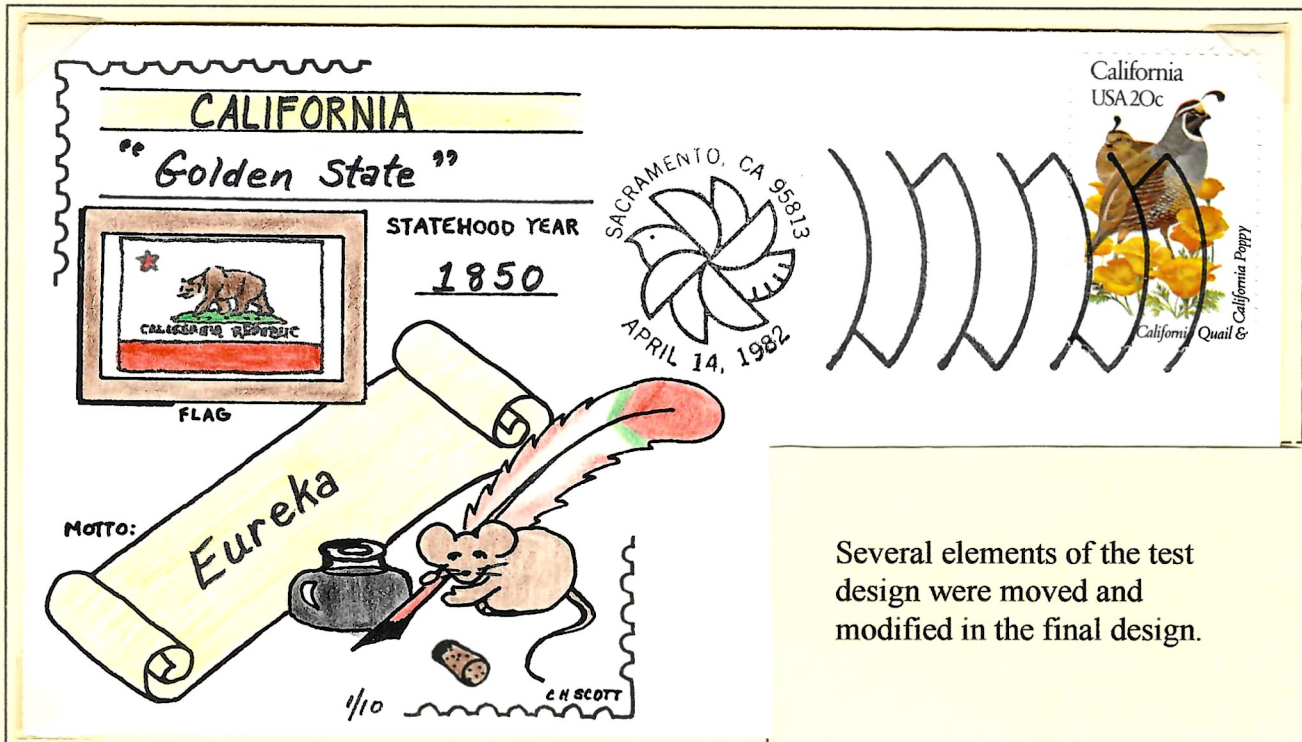
B.1. Black on White

B.1.a. Details Added by Hand

This is a sample of the FIRST commercially printed black and white envelope for Anon E. Mouse Cachets. It was a long way from being a finished product. A lot of hand lettering, coloring, and some cutting and pasting followed the printer's work.



C.H. SCOTT
P.O. Box 2058
Pioneer, Ca. 95666



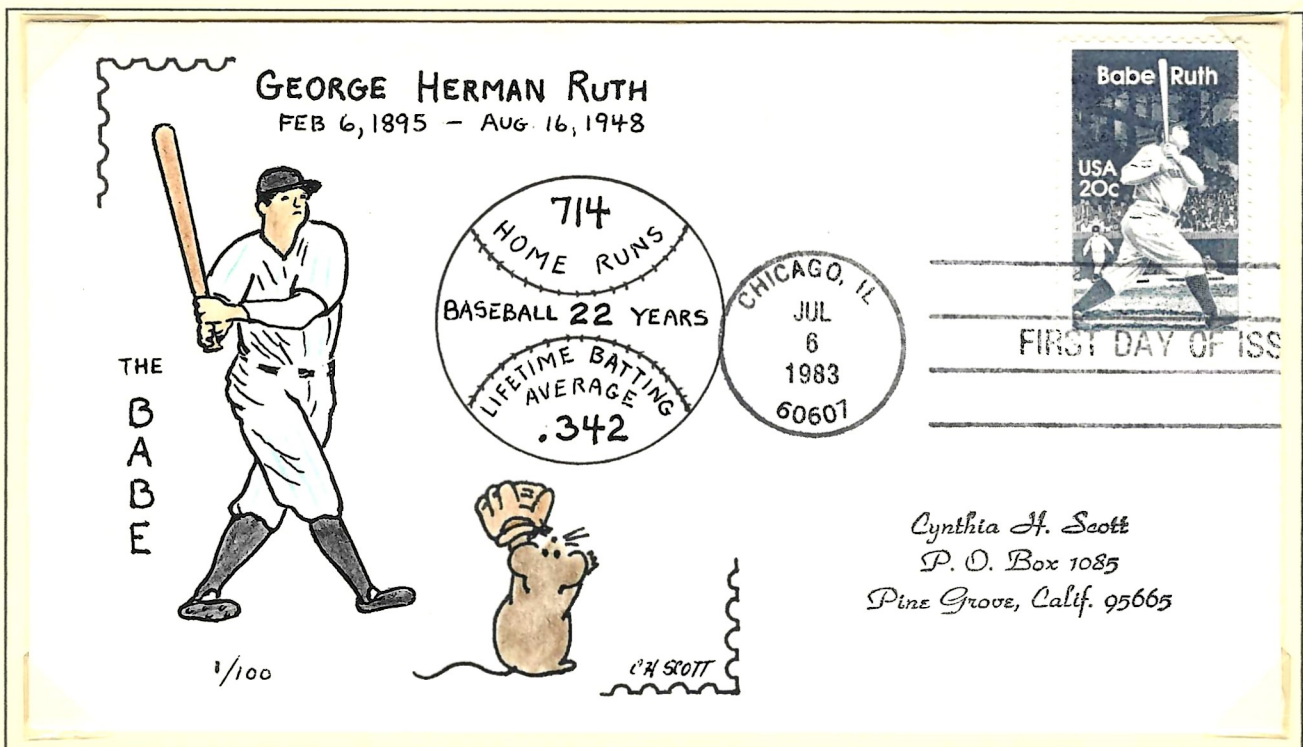
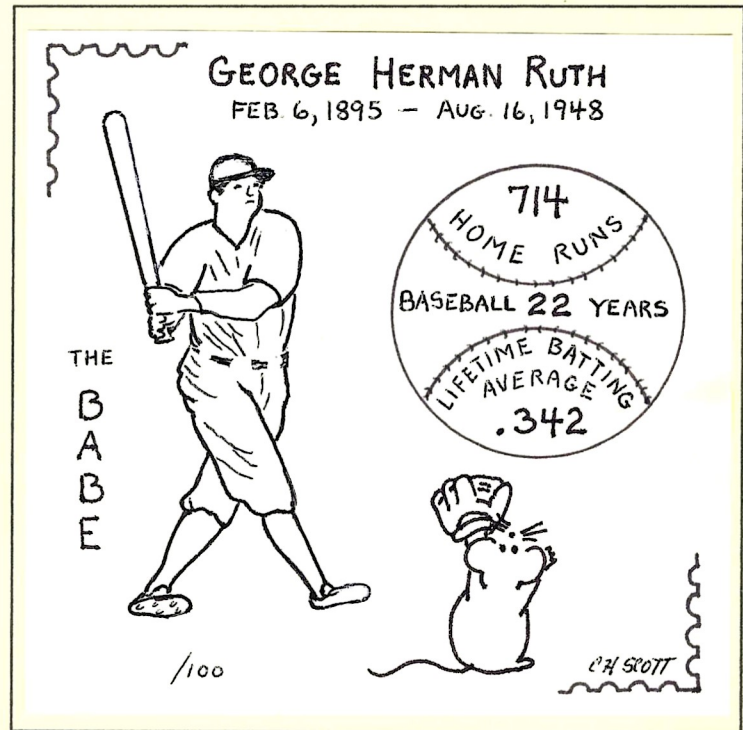
Several elements of the test design were moved and modified in the final design.

B.1. Black on White

B.1.b. Minimum Color by Hand

Baseball issues were known to be good sellers. This cachet and the one on the next page were the FIRST for which 100 copies were made. This was more than the cachet maker could ever expect to finish with very much hand work. Only five main pencil colors tint these cachets.

The heavy lines in this template (given to the printer) are from a felt-tip pen. The finer lines and small lettering came from a ball-point pen.



*Cynthia H. Scott
P. O. Box 1085
Pine Grove, Calif. 95665*

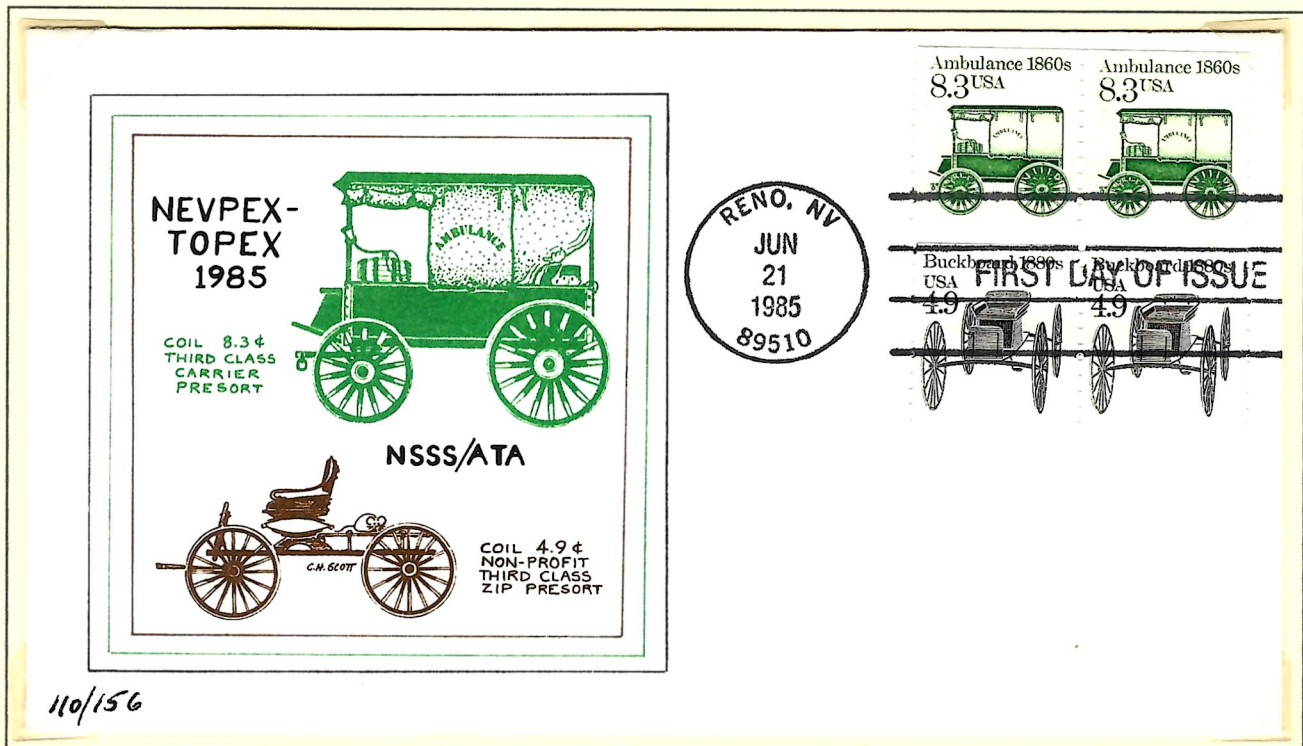
B.2. Color Separation

B.2.a. Three Color Reduction

This is the FIRST three-color offset printed cachet by Anon E. Mouse. It was designed for the Nevada Stamp Study Society, to be sold as a show souvenir. The original drawings were four times bigger, with each different color drawn on a separate piece of paper.

Both the Buckboard 4.9-cent coil and the Ambulance 8.3-cent coil stamps were issued the same day, at this show. Neither the third class carrier presort nor the non-profit third class zip presort rate are appropriate for this cover, but exceptions were allowed for the philatelic event.

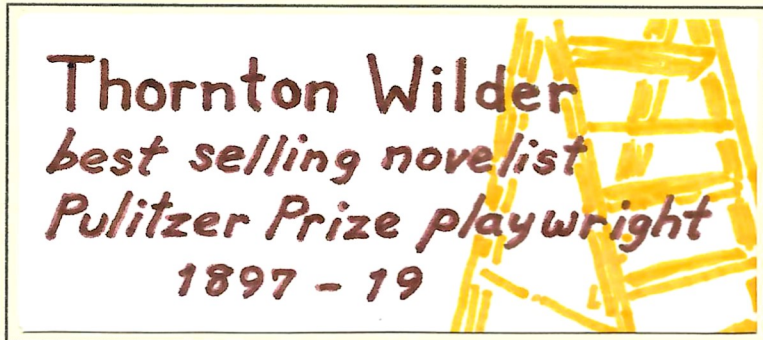
This was also the FIRST run of Anon E. Mouse FDCs produced without an address. They were serviced on a hand-back basis at NEVPEX.



The cachet trademark mouse on the buckboard would have to weigh around ten pounds if the picture were "to scale." Taking artistic liberties is sometimes the only way to combat the problem of showing a tiny animal on a large object.

B.2. Color Separation

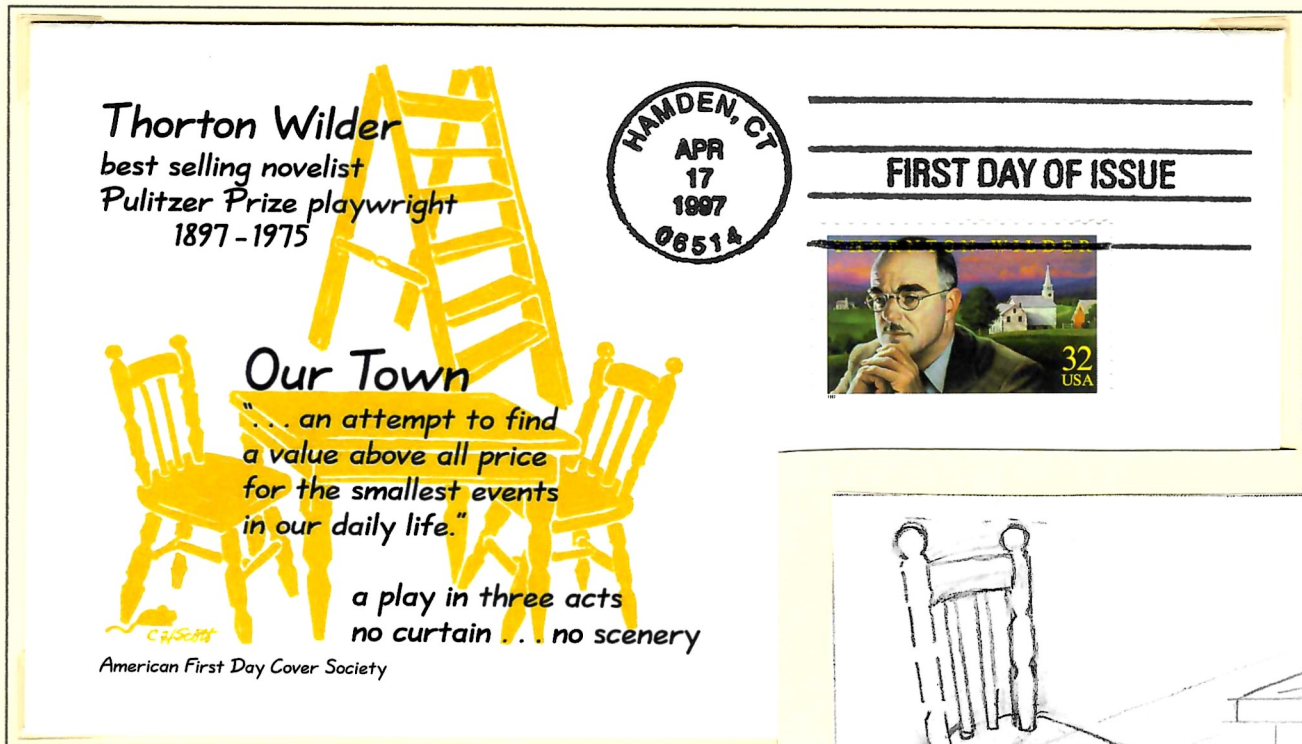
B.2.b. Two Color Reduction



Oops!

This full-sized test drawing has hand lettering with name and words spelled correctly.

In the next production step, the computer-printed text missed close inspection: a letter "n" dropped out of Wilder's first name.



Pencil drafts and felt-tip marker color trials were produced by the artist while she was away from home. The final text and photocopier-reduced separations were prepared for the printer a week later, when the artist had access to a computer. Deadline haste may have contributed to the spelling error above.

